



Lifeline comforts
for lifestyle living...



Vastu Traditions Blend with Architectural Technology



An Individual E Khatas
For Independent Flats
**Ownership Transfer
- Life Makes U R Easy**



TYPICAL FLOOR PLAN AREA STATEMENT IN SQ.FTS

UNIT NO	TYPE	AREA	FACING
001	3 BHK	1260 Sq.ft.	East
002	3 BHK	1260 Sq.ft.	North
003	2 BHK	1000 Sq.ft.	North
004	3 BHK	1230 Sq.ft.	East
005	3 BHK	1260 Sq.ft.	East
006	2 BHK	1025 Sq.ft.	East
007	3 BHK	1240 Sq.ft.	East
008	3 BHK	1300 Sq.ft.	North
009	2 BHK	1025 Sq.ft.	North
010	3 BHK	1270 Sq.ft.	East
011	3 BHK	1240 Sq.ft.	East
012	2 BHK	1000 Sq.ft.	East



Explore the luxury of space with Sri Nandana Neo

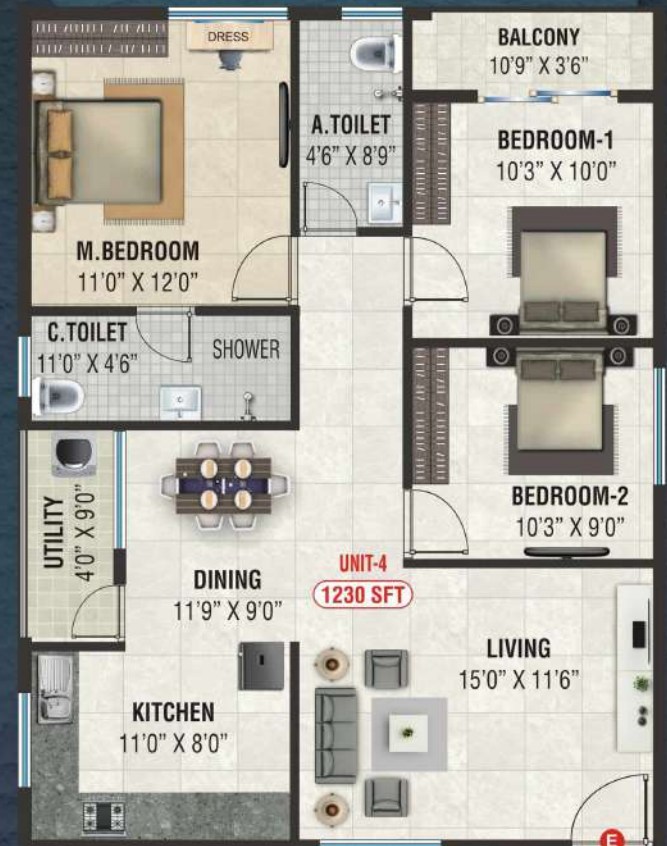
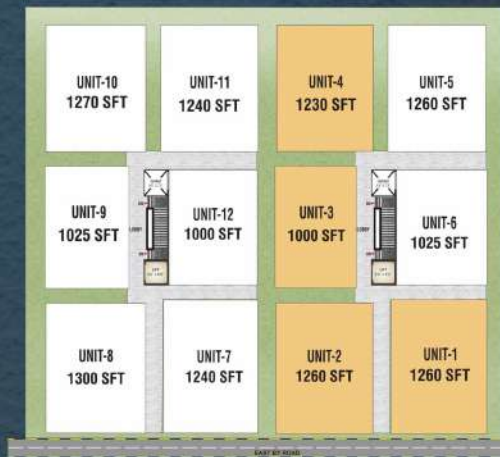
“Sri Nandana Neo” are one of the leading Developers in Bangalore, and gives you an opportunity to invest in one of most salubrious Projects.

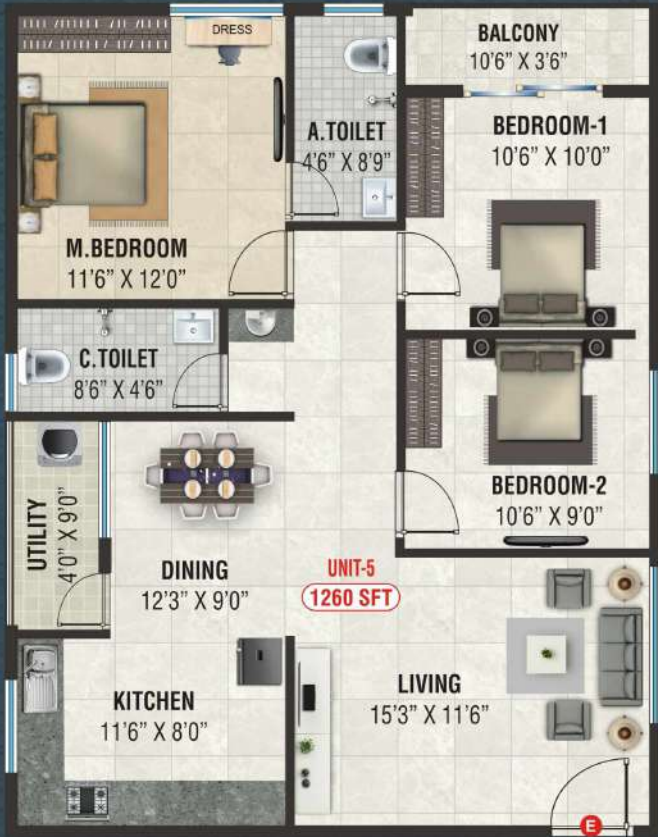
“Sri Nandana Builders” is your own heaven of peace, Prosperity & happiness . The project is situated at Electronic City phase 1 , Near Neo Town, Bangalore. It will have a total of 48 Flats with best of amenities. It is a premium housing project near to the hub of IT Companies, and it is at just 6 kilometers from Central Silk board towards Electronic city. It is at close proximity to many well-known offices, educational Institutions, Hospitals, & Shopping Malls. It offers a retreat of amity & tranquillity within the gated community. We have planned every aspect of this enclave thoroughly. The property is developed by the best minds and built with quality materials with the help of state of the art technology. Invest today in a piece of gold mine at “Sri Nandana Neo” and give a positive direction to your investment.





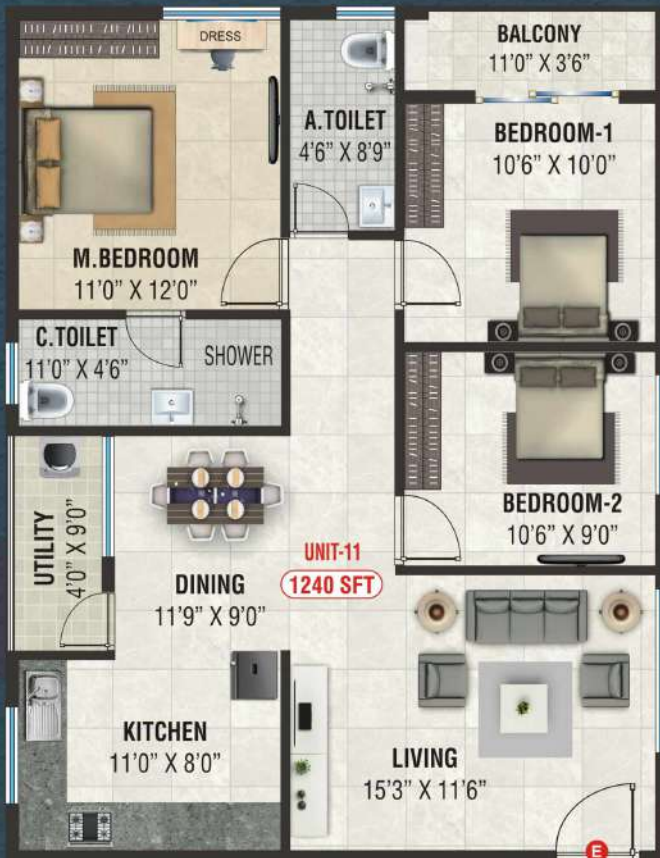
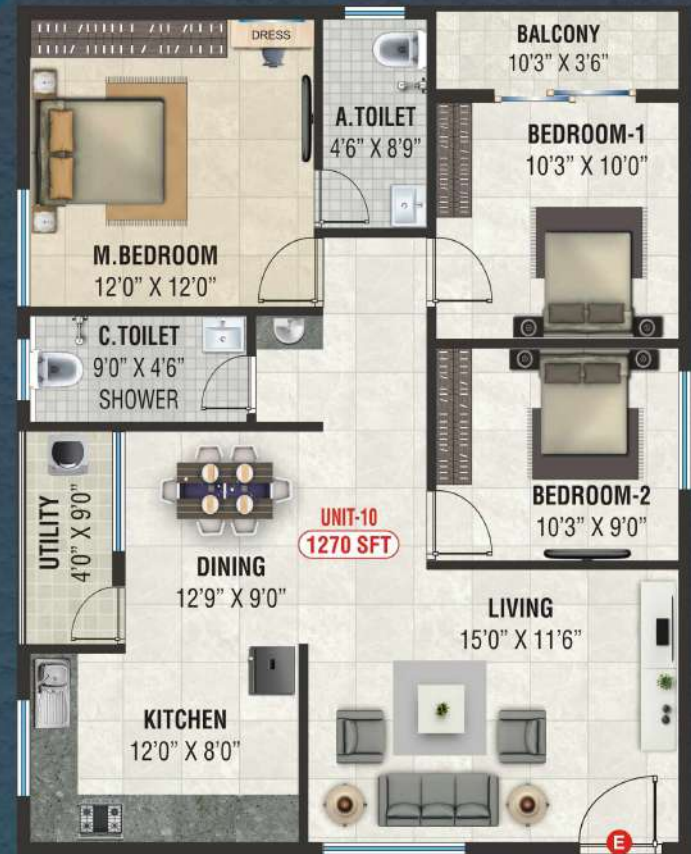
KEY PLAN



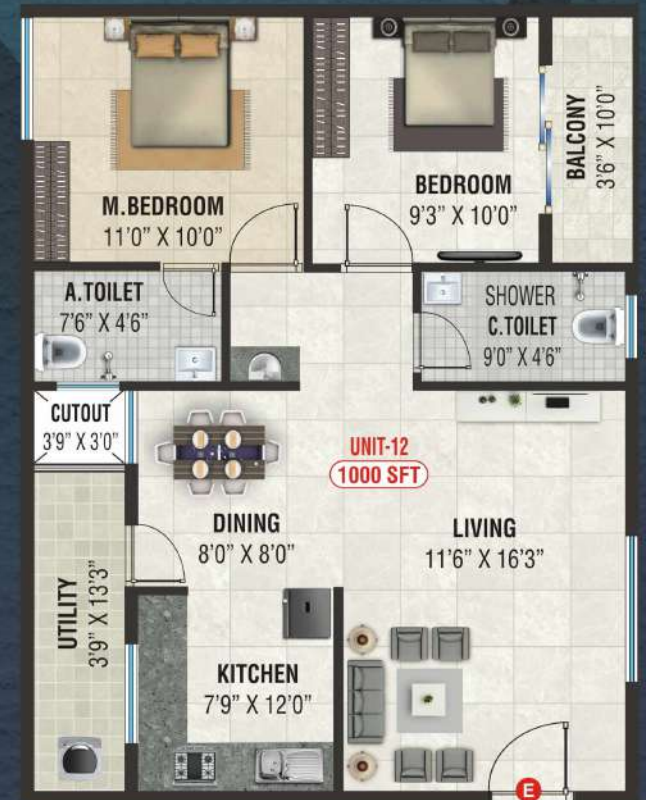
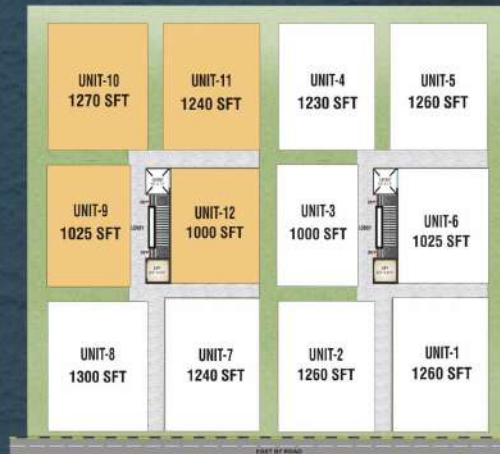


KEY PLAN

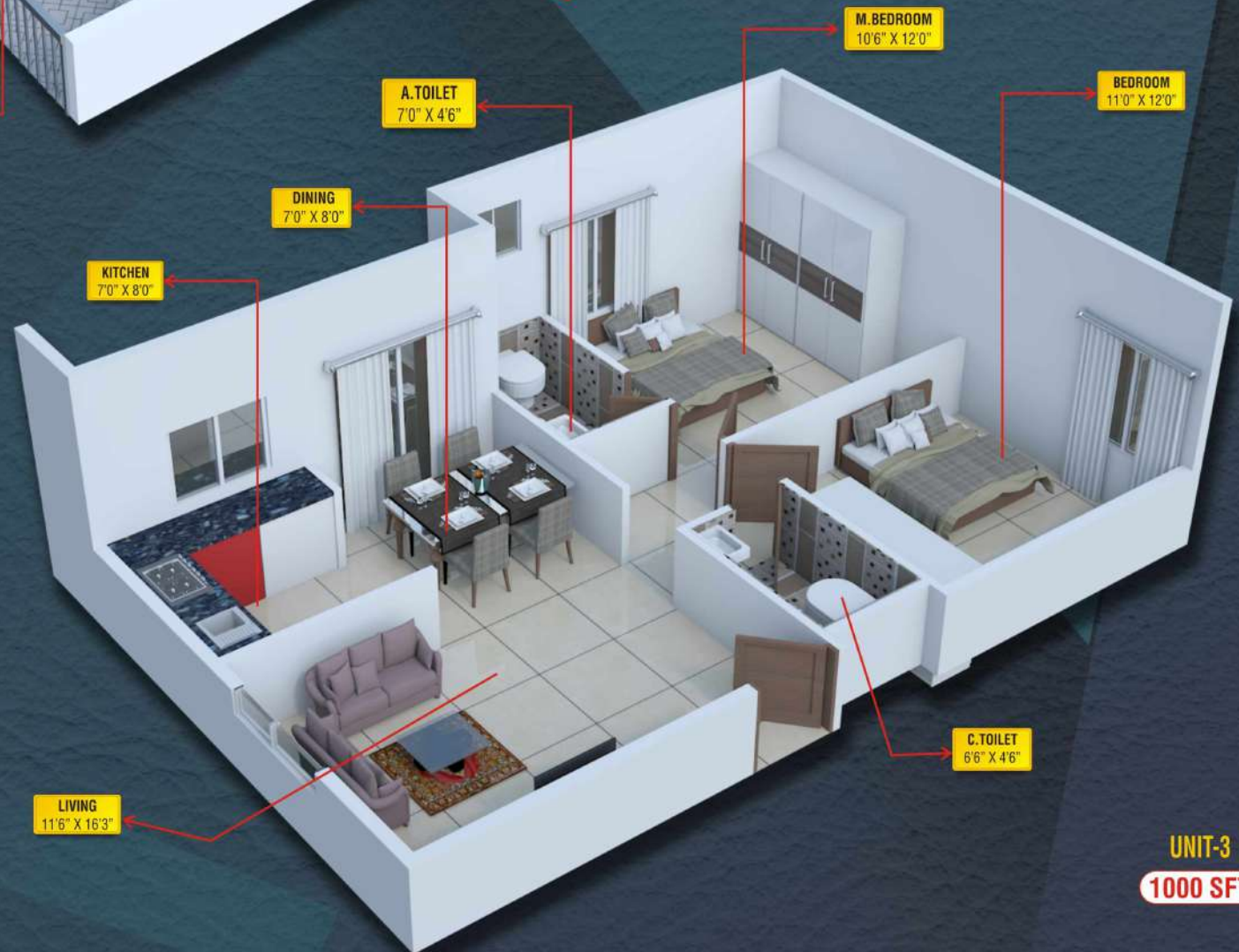
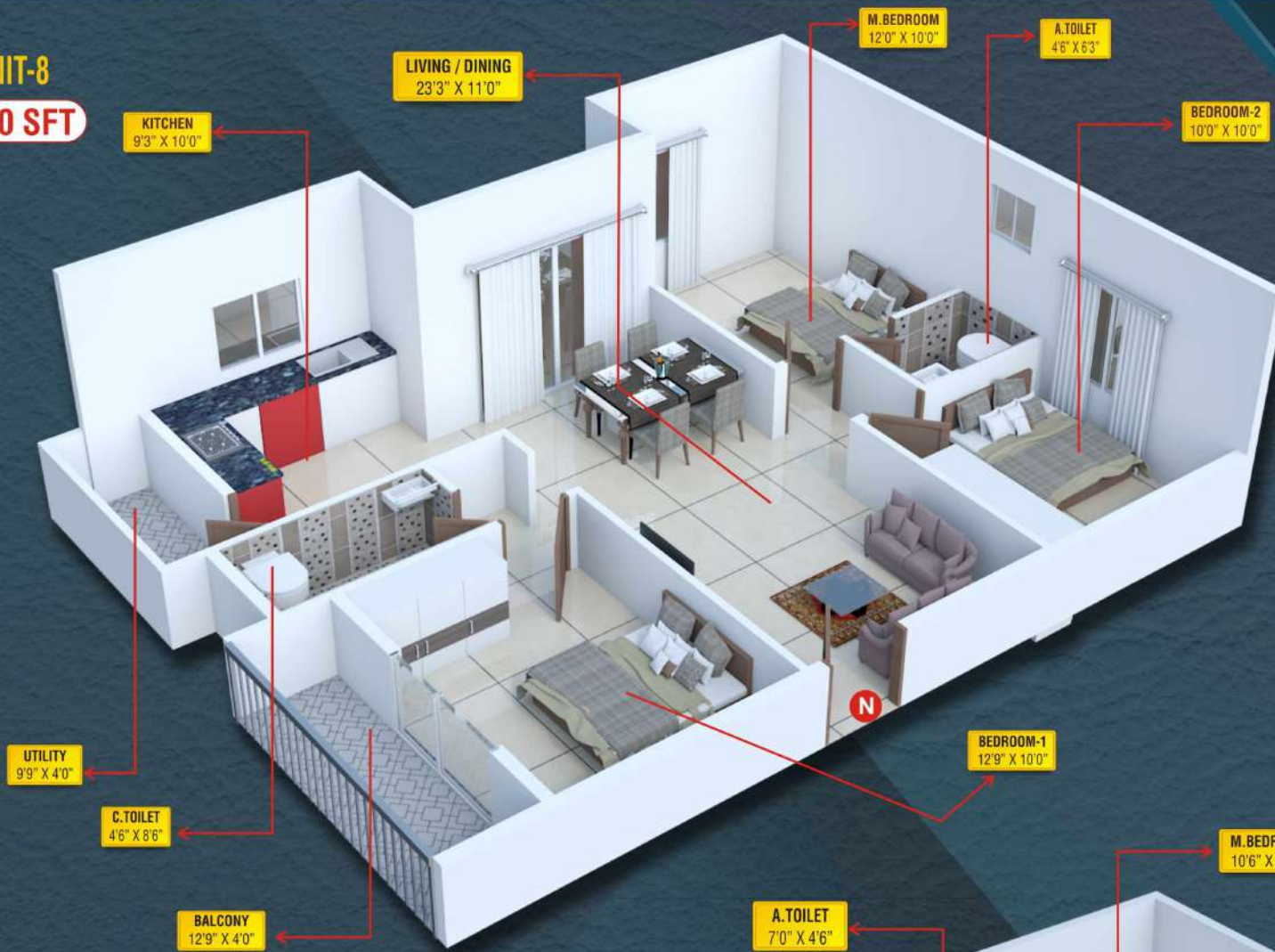




KEY PLAN



UNIT-8
1300 SFT



UNIT-3
1000 SFT

SPECIFICATIONS

BE SMARTER



Save Water

Rain water Harvesting & Recycle Water

Sewage Treatment Plant

STRUCTURE :

- RCC framed structure with necessary footing columns and beams. All of Reinforced cement concrete as per structural design. Walls of solid concrete blocks.

FLOORING :

- Living, Dining, Bedroom, Kitchen – Vitrified tiles
- Balconies / Utility / Bathrooms – Anti skid Ceramic tiles
- Bathrooms Walls – ceramic tiles dado up to 7'0"
- Lobby & Stair case area – Granite

POWER BACKUP:

- Power Back-up for Common Area with water sump and lift

RAILINGS

- All the balconies have 4" Concrete block work with MS railings

SECURITY SYSTEMS

- Security personnel to patrol the community round the clock.

KITCHEN

- Black polished granite with stainless steel sink. Ceramic tiles 30" above the granite platform.
- Provision for aqua-guard & Refrigerator.
- Provision for washing machine in utility.

PLASTERING

- All internal walls are smoothly plastered
- External walls: Sponged finished plastering.

BATHROOM FITTING

- Fitting & fixtures – Hindware or equivalent.
- Cp fitting – Jaquar or cera or equivalent.
- Provision for exhaust fan & geyser.

PAINTING

- Interior - 2 coat Tractor Emulsion paint with roller finish and OBD for ceiling.
- Exterior - Water proof coloured cement based and textured paint at selective places.
- Grills - Enamel paint for MS grills.

ELECTRICAL

- Fire resistant electrical wires. Concealed copper wiring with adequate light points of anchor 'ROMA' make or equivalent.
- Telephone point at living room.
- Cable point at living & master bedroom.
- AC point provisions in master bedroom.

WINDOWS

- 2 & 3 track Aluminum frames with glass panel sliding shutters with safety grills.

DOORS

- Main door - teak wood frame & shutters
- Internal doors - hard wood frame and Skin Doors

Amenities



BANQUET HALL



GYM WITH EQUIPMENT



COVERED CAR PARKING



LIFT 2 NOS



FULL POWER BACK-UP (NO INVERTERS)



RAIN WATER HARVESTING



STP



CCTV CAMERA



INTERCOM FACILITY

How To Reach Our Project



Proximity :

- Just off Hosur Main Road
- 5 Km From Silk Board
- Walkable Distance from Basapura Proposed Metro Station
- 2 Km from PES School of Engineering
- 4 Km from Narayana Hrudayalaya Hospital
- 3 Km from Metro Cash & Carry
- 3 Km from Electronic City
- 12 Km from Vidhana Soudha

Educational Institutions :

- PES School of Engineering
- Delhi Public School
- Day School
- Paradise Residential School
- Acts Secondary School
- BRS Global Center

Hospitals :

- Narayana Hrudayalaya
- Swamy Trauma Care
- Sparsh Hospital
- Vimalaya Hospital
- Srinidhi Hospital
- Live 100 Hospital

Major IT Sectors :

- WIPRO
- Infosys
- Siemens
- Bosch
- TCS



Electronic City Phase I,
Behind Neo town / smondoville 3,
Hulimangala Village, Jigani Hobli,
Anekal Taluk, Bangalore

For booking Contact :

9886 955 525

nandana.promoters@gmail.com
www.nandanaroyal.com

Our Completed Projects



Murari Orchids -
Bsk 6th Stage,
Uttarahalli Main Road



Murari Classic -
Electronic city Phase 1



Murari Grand -
Electronic City Phase 1



Sri Nandana Royal- Electronic City Phase 2



Sri Murari grand
On Going Project @ Basapura Main Road -
Hosa Road Junction- off Hosur Road